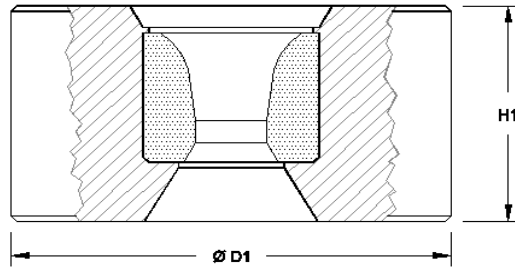
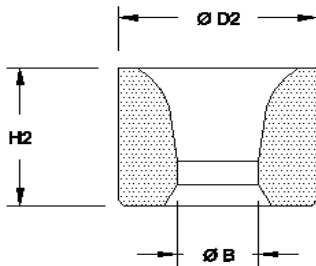




BAR DRAWING DIES

Our Bar drawing dies are manufactured within the ISO 9001: 2000 quality system and conform to the various International Standards.



| TC Nib | Case | B | | TC Std Grades |
|----------|----------|-------|-------|------------------|
| | | Min | Max | |
| D2 - H2 | D1 - H1 | | | |
| 30 x 24 | 53 x 41 | 6.00 | 12.50 | H10N |
| 35 x 24 | 75 x 45 | 12.00 | 17.00 | H10N |
| 40 x 24 | 75 x 45 | 15.00 | 20.00 | H10N |
| 45 x 25 | 100 x 45 | 18.00 | 24.00 | H10N |
| 50 x 25 | 100 x 45 | 21.00 | 27.00 | H10N |
| 55 x 27 | 125 x 50 | 24.00 | 31.00 | H10N |
| 60 x 27 | 125 x 50 | 27.00 | 35.00 | H10N |
| 65 x 27 | 125 x 50 | 29.00 | 39.00 | H10N |
| 70 x 30 | 150 x 60 | 31.00 | 42.00 | H10N |
| 75 x 30 | 150 x 60 | 33.00 | 45.00 | H10N |
| 80 x 30 | 150 x 60 | 36.00 | 48.00 | H10N |
| 85 x 33 | 200 x 65 | 38.00 | 51.00 | H10N |
| 90 x 33 | 200 x 65 | 40.00 | 54.00 | H10N |
| 95 x 33 | 200 x 65 | 44.00 | 56.00 | H10N |
| 100 x 35 | 200 x 65 | 54.00 | 60.00 | H10N |
| 105 x 35 | 250 x 65 | 57.00 | 66.00 | H10N |

For bore sizes below the above please consult the [WIRE DRAWING DIE](#) section

Please note !

- The above list of case sizes are standards, we can accommodate any size to suit your needs.



INVESTOR IN PEOPLE