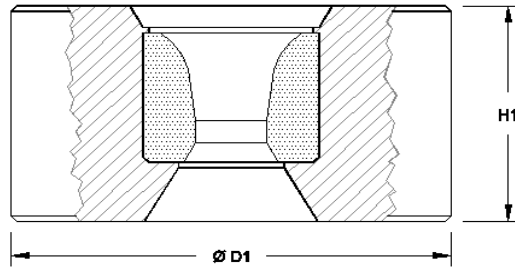
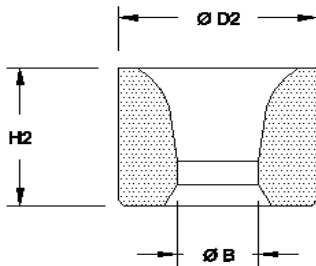




TUBE DRAWING DIES

Our Tube Drawing Dies are manufactured within the ISO 9001: 2000 quality system and conform to the various International Standards.



TC Nib	Case	B		TC
D2 - H2	D1 - H1	Min	Max	Std Grades
25 x 20	53 x 41	10.00	12.00	H10N
30 x 24	53 x 41	11.00	14.00	H10N
35 x 24	75 x 45	13.00	18.00	H10N
40 x 24	75 x 45	17.00	22.00	H10N
45 x 25	100 x 45	21.00	26.00	H10N
50 x 25	100 x 45	24.00	30.00	H10N
55 x 27	125 x 50	28.00	34.00	H10N
60 x 27	125 x 50	32.00	38.00	H10N
65 x 27	125 x 50	36.00	42.00	H10N
70 x 30	150 x 60	40.00	45.00	H10N
75 x 30	150 x 60	43.00	50.00	H10N
80 x 30	150 x 60	48.00	55.00	H10N
85 x 33	200 x 65	53.00	58.00	H10N
90 x 33	200 x 65	56.00	62.00	H10N
95 x 33	200 x 65	60.00	67.00	H10N
100 x 35	200 x 65	65.00	70.00	H10N
105 x 35	250 x 65	68.00	75.00	H10N
110 x 38	250 x 65	73.00	78.00	H15N
115 x 38	250 x 65	76.00	83.00	H15N

TC Nib	Case	B		TC
D2 - H2	D1 - H1	Min	Max	Std Grades
120 x 38	250 x 65	81.00	88.00	H15N
125 x 38	250 x 65	84.00	92.00	H15N
130 x 40	300 x 70	88.00	97.00	H15N
135 x 40	300 x 70	93.00	101.00	H15N
140 x 40	300 x 70	98.00	105.00	H15N
145 x 40	300 x 70	102.00	109.00	H15N
150 x 40	300 x 70	106.00	114.00	H15N
155 x 40	350 x 70	110.00	119.00	H15N
160 x 40	350 x 70	116.00	125.00	H15N
165 x 40	350 x 70	121.00	130.00	H15N
170 x 40	350 x 70	126.00	135.00	H15N
175 x 40	350 x 70	131.00	140.00	H15N
180 x 40	400 x 70	136.00	145.00	H15N
185 x 40	400 x 70	141.00	150.00	H15N
190 x 40	400 x 70	145.00	155.00	H15N
195 x 40	400 x 70	150.00	160.00	H15N
200 x 40	400 x 70	155.00	165.00	H15N
210 x 40	450 x 70	161.00	175.00	H15N
220 x 40	450 x 70	171.00	185.00	H15N

Please note !

- The above list of case sizes are standards, we can accommodate any size to suit your needs.
- Please consult our tooling section for **FIXED & FLOATING PLUGS and MANDRELS**



INVESTOR IN PEOPLE